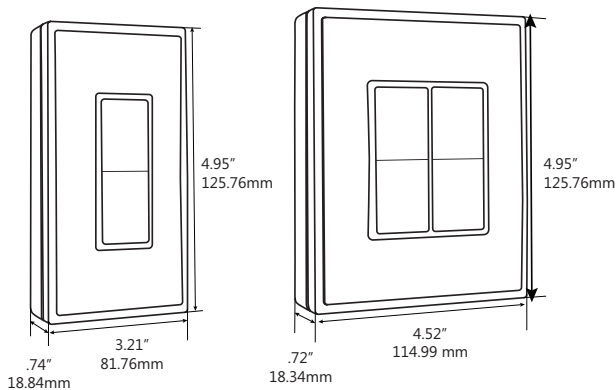




## Rocker Pad (Single, Double)



### Package Contents

- Rocker pad
- Wall plate
- Screws and wall anchors

### Tools Required

- Power drill, 3/16" bit
- Screwdriver
- Leveling tool

## Product Description

Self-powered wireless Rocker Pads provide a flexible and convenient interface for switching, dimming and controlling electrical loads. Energy generated by pressing a rocker pad is harvested and used for RF communications with EnOcean-enabled devices.

Single and Double Rocker pads can be surface mounted or installed flush over an existing wall box.

### Features Include:

- User interface for switching, dimming (when used with a dimmable controller) and more.
- Harvests energy from linear motion - no batteries.
- Transmits unique RF message each time pressed or released.

## Specifications

Power Supply	Mechanical energy harvesting (power is generated by the motion of pressing the switch)
Transmission Range	80 ft. (25 m)
RF Communications	EnOcean 902 MHz (ESRPU, EDRPU) EnOcean 315 MHz (ESRPC, EDRPC)
EEP (EnOcean Equipment Profile)	F6-02-02
Dimensions	Single: 4.95" H x 3.21" W x 0.74" D (126mm x 82mm x 19mm) Double: 4.95" H x 4.52" W x 0.72" D (126mm x 115mm x 18mm)
Weight	Single: 3.9 oz (112g) Double: 5.3 oz (150g)
Environment	<ul style="list-style-type: none"> <li>• Indoor use only</li> <li>• 14° to 104°F (-10° to 40°C)</li> <li>• 20% to 95% relative humidity (non-condensing)</li> </ul>
Agency Compliance	FCC, IC

## 1. Planning

Take a moment to prepare and ensure optimal communications with other system components, and for user convenience.

- Pick a convenient location, perhaps near a door where occupants enter and exit
- Consider the construction materials in the space and obstacles that may interfere with RF signals

## 2. Installing

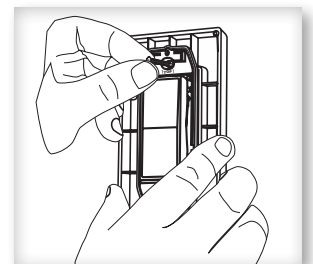
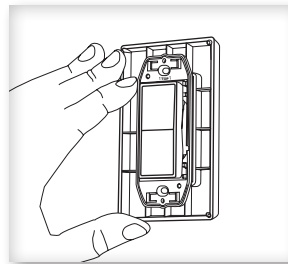
estimated time: 10 minutes



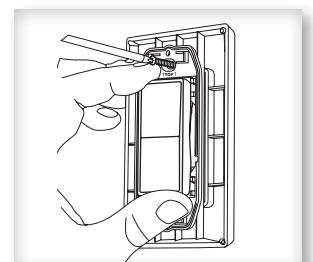
1. Decide where you want to mount the rocker pad. The standard height for wall switches is 49" or 125 cm on center.
2. Remove the wall plate from the rocker pad assembly.
3. Decide which of the two installation options is appropriate.

### A. Surface Mounted Installation

- i. Using a level and a pencil, lightly mark 2 small dots to align the top edge of the mounting plate.
- ii. Mark the mounting screw drill points.

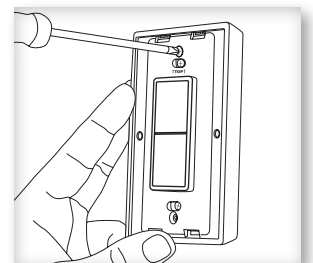


- iv. Drill holes for the wall anchors with a 3/16" drill bit and insert wall anchors.



- v. Insert the top screw(s) loosely and level the back plate.

- vi. Insert the bottom screw(s), and then hand tighten the top screw(s).



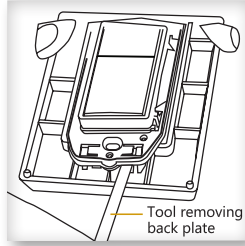
- vii. Attach the wall plate on top of the rocker pad using the two screw holes.

NOTE: For proper assembly, make sure to align the "top" labels on the rocker pad and wall plate.

**B. Flush Mounted Installation**

NOTE: When installing over an existing wall box make sure any bare electrical wires are capped. Where local building codes require the use of UL certified wallplates, please replace the provided wallplate by a certified wallplate made of plastic. Metal wallplates are not recommended, as they would reduce radio coverage!

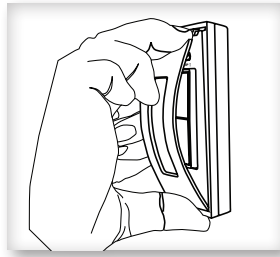
- i. Remove the assembly screws which hold the wall plate, rocker pad, and mounting plate together.
- ii. Use a tool to carefully pry the rocker pad free from the back plate. The back plate is not used for this option.
- iii. Mount the rocker pad over the existing wall box using the two screw holes,



NOTE: For proper assembly, make sure to align the "top" labels on the rocker pad and wall plate.

- iv. Attach the wall plate on top of the rocker pad using the two wall box screw holes.

- 4. Insert the trim plate tabs in the bottom slots, and then lightly flex the plate to insert top tabs.



TIP: To remove the trim plate, use a flat-head screwdriver to depress the trim plate tabs using the 2 slots on the bottom of the wall plate. Alternatively, use a fingernail to press down along the top groove and flex the tabs out of the slots.

- 5. Click the rocker pad on and off to test the mechanism.

NOTE: To activate dimming, press and hold; top button to increase, bottom button to decrease.

**3. Linking**

Two or more compatible devices can be linked and configured to provide the desired control. There are two basic types of devices in the system; transmitters and transceivers.

- **Transmit-only:** Transmitters are simple energy-harvesting devices that send RF messages to communicate a condition, level, or state. Transmitters can only be linked to transceivers. Examples > Self-powered Light Switches, Occupancy Sensors
- **Transmit & Receive:** Transceivers are controlling devices that send as well as receive RF messages. They also process relevant control logic, and actuate the appropriate outputs (switching a light on or off for example). Transceivers can be linked with transmitters as well as other transceivers. A transceiver can have up to 30 devices linked to it. Examples > Relays, Gateways

**The Rocker Pads are Transmit-only Devices.**

To link the Rocker Pad to a transceiver; the transceiver must first be powered, within wireless range of the sensor, and set to accept links.

**To Link or Unlink a Rocker Pad**

- 1. Set the desired transceiver to the desired Link/Unlink mode. (refer to receiving device's installation guide).
- 2. Click the rocker pad's top button three times quickly.
  - >The rocker pad is now linked.

Refer to the "Linking" section of the transceiver/controller installation guides to verify the linking process.

**Troubleshooting**

Problem	Solution Checklist
The rocker pad does not generate a message	<ul style="list-style-type: none"> <li>▪ Verify the rocker pad is installed in the proper orientation</li> </ul>
The linked device does not respond to wireless messages	<ul style="list-style-type: none"> <li>▪ Check for environment or range issues</li> <li>▪ Verify the device is linked</li> <li>▪ Check the transceiver connection and the wiring for errors</li> <li>▪ Check if appropriate devices are linked according to good system planning</li> </ul>

<b>FC</b>	902 MHz: Contains FCC: SZV-PTM210U IC: 5713A-PTM210U	315 MHz: Contains FCC: SZV-PTM210C IC: 5713A-PTM210C
-----------	--	--

This device complies with part 15 of the FCC rules and Industry Canada ICES-003. Operation is subject to the following two conditions: (1) This device may not cause harmful interference, and (2) this device must accept any interference received, including interference that may cause undesired operation.

IMPORTANT! Any changes or modifications not expressly approved by the party responsible for compliance could void the user's authority to operate this equipment.

Le présent appareil est conforme aux CNR d'Industrie Canada applicables aux appareils radio exempts de licence. L'exploitation est autorisée aux deux conditions suivantes: (1) l'appareil ne doit pas produire de brouillage, et (2) l'utilisateur de l'appareil doit accepter tout brouillage radioélectrique subi, même si le brouillage est susceptible d'en compromettre le fonctionnement.

IMPORTANT! Tous les changements ou modifications pas expressément approuvés par la partie responsable de la conformité ont pu vider l'autorité de l'utilisateur pour actionner cet équipement.