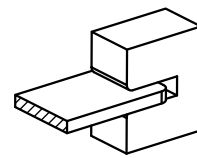
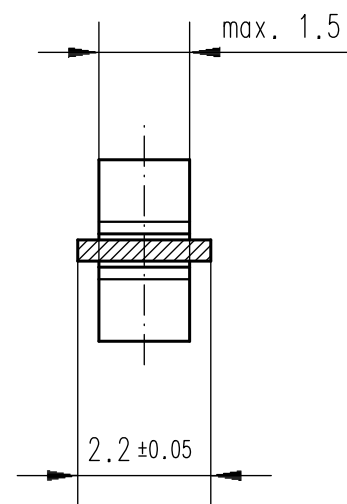
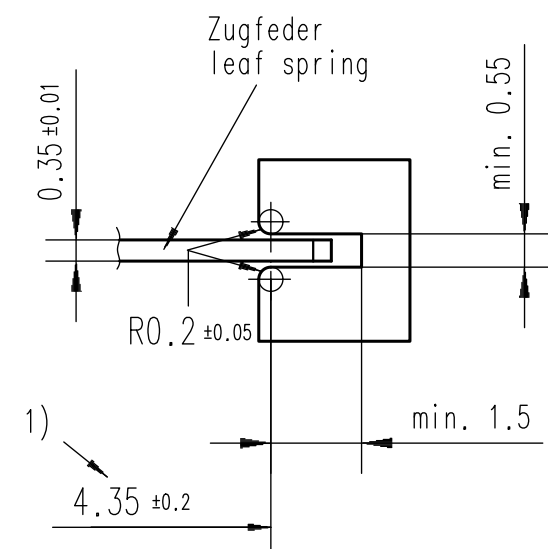
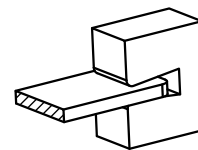
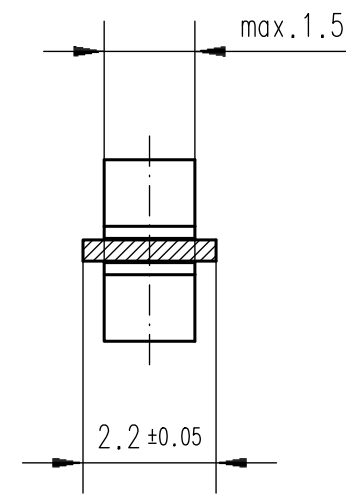
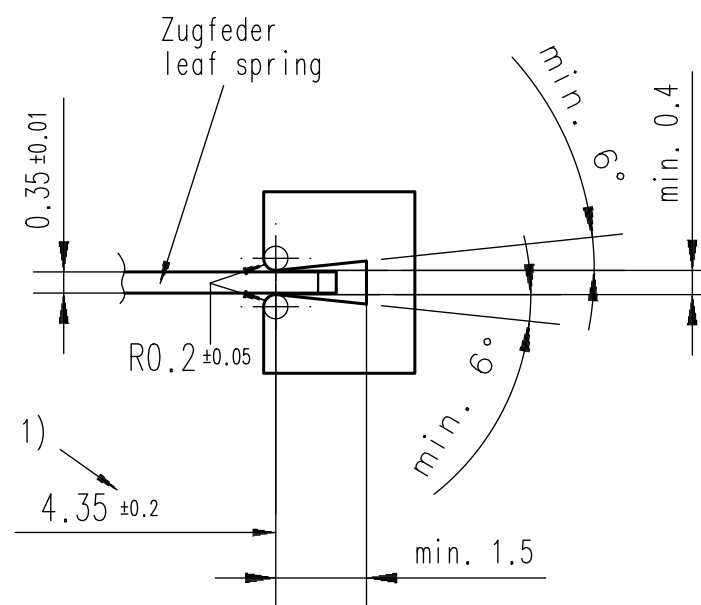


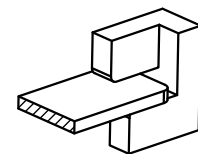
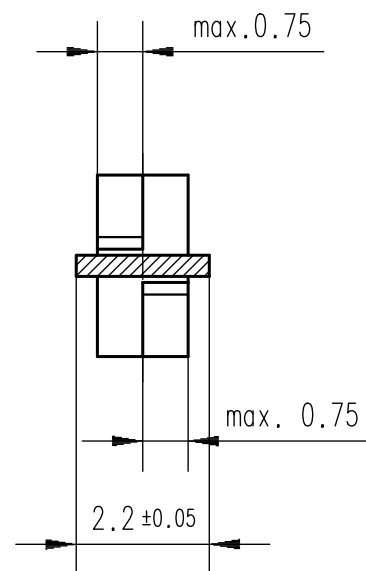
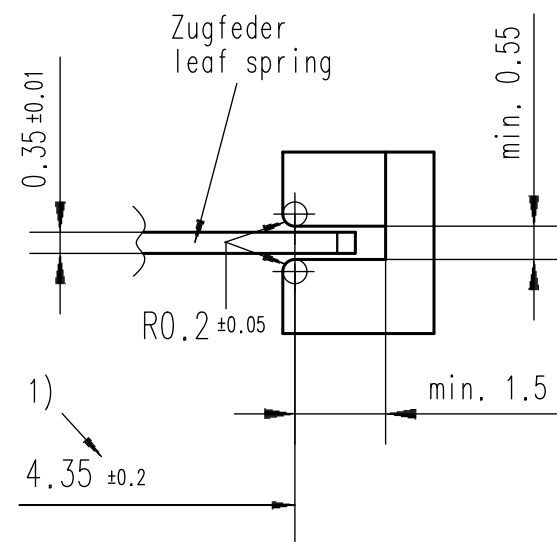
Variante 1
variant 1



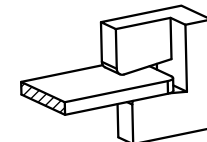
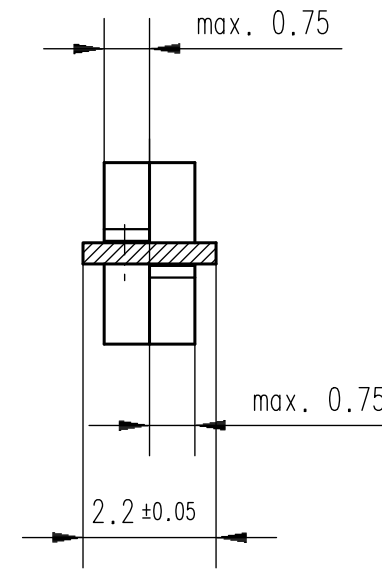
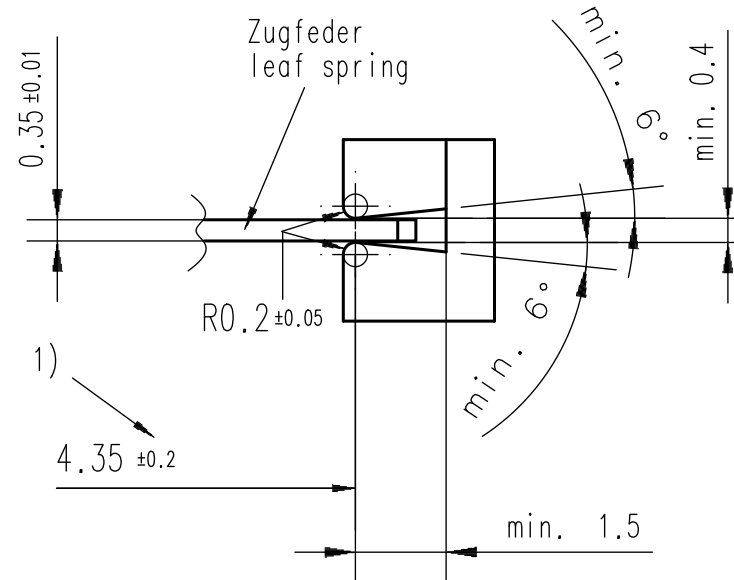
Variante 2
variant 2



Variante 3
variant 3



Variante 4
variant 4



1) Betätigungsstelle siehe Einbauanweisung EC0200 (Ansicht 2-3-5-6) A33-M01 Bl.1
Actuating point see installation instruction EC0200 (view 2-3-5-6) A33-M01 Bl.1

Beispiele für richtige Schnittstelle zwischen der Betätigungsgabel und der Zugfeder.
Examples for proper interface between actuating fork and leaf spring.

		Massstab 8:1	
	Datum	01.11.11	Installation instruction EC0200
	Bearb.	Grassl	
	Gepr.	31.07.2020 SK	
	Norm.		
3	min. Federmaß	31.07.2020	Gra. EnOcean A33-M01
2	-----	09.03.12	
Zust.	Mitteilung	Datum	Name
		Blatt 3	
		4 Bl.	