

## Humidity Sensor Module HSM 100

**The humidity sensor module HSM 100 extends the functionality of STM 33x / STM 330C / STM 33xU / STM 431J temperature sensor modules.**

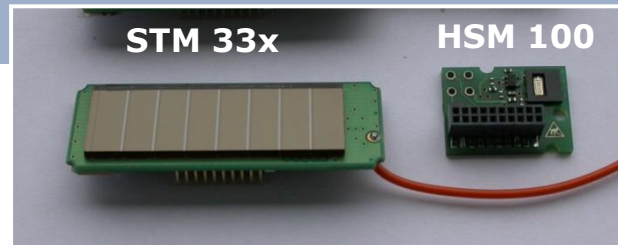
### Functional Principle

HSM 100 contains an internal calibrated humidity sensor. It can be plugged onto members of the STM 33x / STM 431J module family via a 20 pin connector. The sensor signal is read via the ADIO3 input of STM 33x / STM 431J.

In order to be able to read the sensor signal, STM 33x / STM 431J has to be configured to an EEP supporting humidity. This can be done via Dolphin Studio.

### Features Overview

<b>Humidity sensor</b>	measurement range 0%-100% r.h. resolution 0.4% r.h. accuracy typ. $\pm 5\%$ r.h. between 30%-70% r.h. and 0-40°C
<b>Power supply</b>	via SWPWR pin from STM 33x / STM 330C / STM 33xU / STM 431J
<b>Module dimensions</b>	18 x 13 mm
<b>Operating temperature</b>	-20 up to +60 °C



**Type**  
**HSM 100**

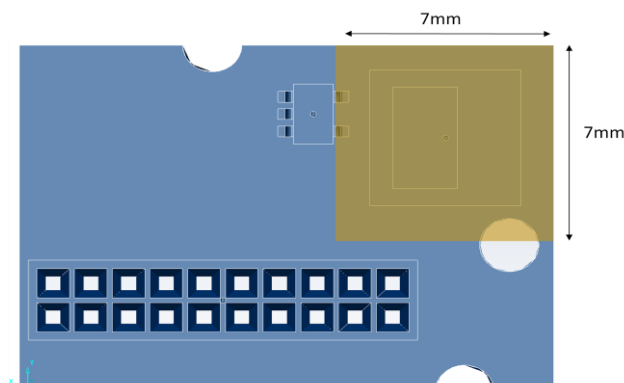
**Ordering Code**  
**S3095-D100**

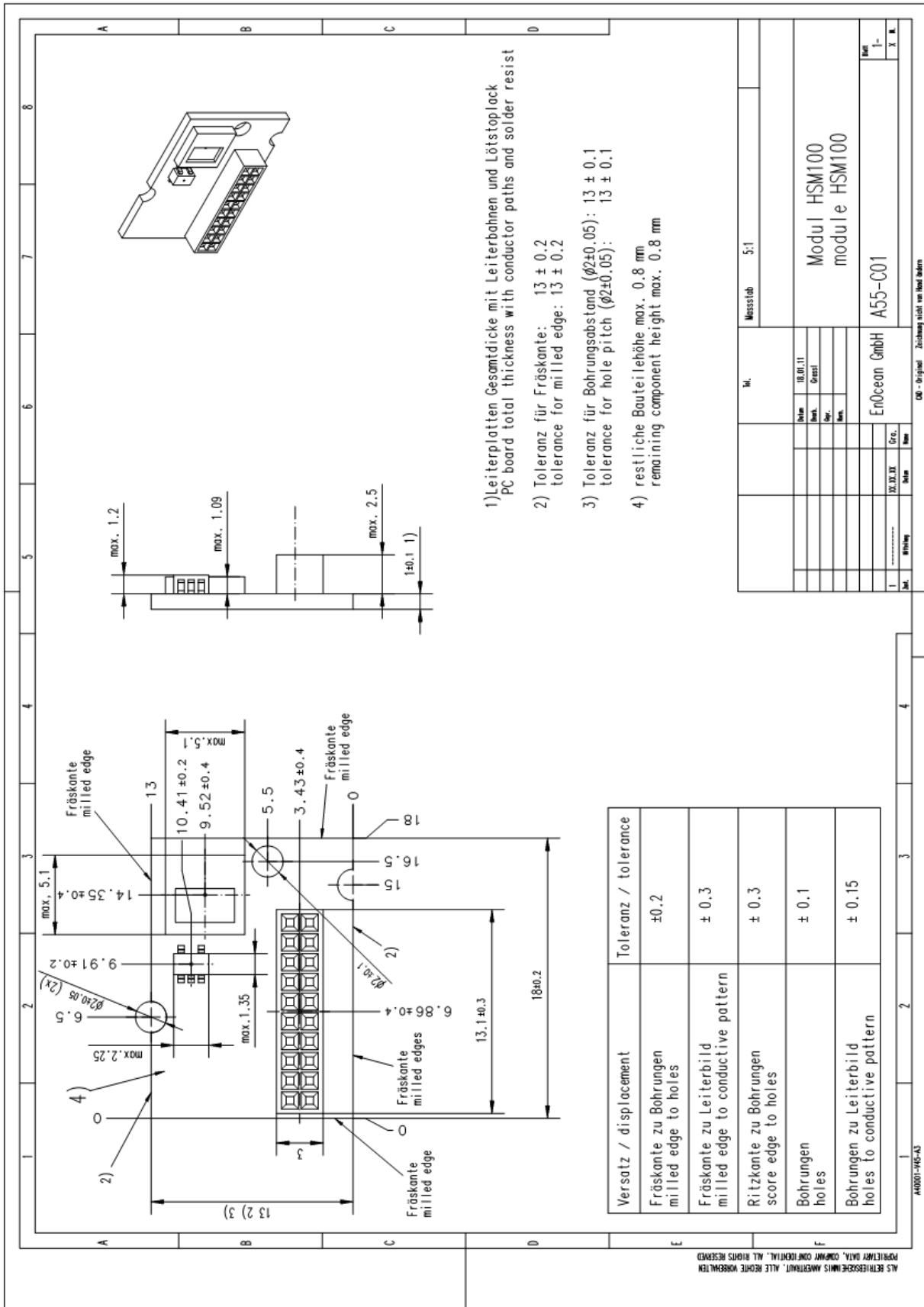


Please ensure sufficient ventilation of air inside the housing. Otherwise the measurement will not represent ambient humidity.



Please avoid any material within 2mm distance from the 7mm x 7mm area depicted in the figure below (in plane as well as above and below the PCB). The measurement might be influenced by detuning the capacitive sensor.





M. 18.01.11		Messstab	5:1
1	10.01.11	Modul HSM100 module HSM100	
2	10.01.11	ErOcean GmbH	
3	10.01.11	A55-C01	
4	10.01.11	A55-C01	
5	10.01.11	A55-C01	
6	10.01.11	A55-C01	
7	10.01.11	A55-C01	
8	10.01.11	A55-C01	
9	10.01.11	A55-C01	
10	10.01.11	A55-C01	
11	10.01.11	A55-C01	
12	10.01.11	A55-C01	
13	10.01.11	A55-C01	
14	10.01.11	A55-C01	
15	10.01.11	A55-C01	
16	10.01.11	A55-C01	
17	10.01.11	A55-C01	
18	10.01.11	A55-C01	
19	10.01.11	A55-C01	
20	10.01.11	A55-C01	
21	10.01.11	A55-C01	
22	10.01.11	A55-C01	
23	10.01.11	A55-C01	
24	10.01.11	A55-C01	
25	10.01.11	A55-C01	
26	10.01.11	A55-C01	
27	10.01.11	A55-C01	
28	10.01.11	A55-C01	
29	10.01.11	A55-C01	
30	10.01.11	A55-C01	
31	10.01.11	A55-C01	
32	10.01.11	A55-C01	
33	10.01.11	A55-C01	
34	10.01.11	A55-C01	
35	10.01.11	A55-C01	
36	10.01.11	A55-C01	
37	10.01.11	A55-C01	
38	10.01.11	A55-C01	
39	10.01.11	A55-C01	
40	10.01.11	A55-C01	
41	10.01.11	A55-C01	
42	10.01.11	A55-C01	
43	10.01.11	A55-C01	
44	10.01.11	A55-C01	
45	10.01.11	A55-C01	
46	10.01.11	A55-C01	
47	10.01.11	A55-C01	
48	10.01.11	A55-C01	
49	10.01.11	A55-C01	
50	10.01.11	A55-C01	
51	10.01.11	A55-C01	
52	10.01.11	A55-C01	
53	10.01.11	A55-C01	
54	10.01.11	A55-C01	
55	10.01.11	A55-C01	
56	10.01.11	A55-C01	
57	10.01.11	A55-C01	
58	10.01.11	A55-C01	
59	10.01.11	A55-C01	
60	10.01.11	A55-C01	
61	10.01.11	A55-C01	
62	10.01.11	A55-C01	
63	10.01.11	A55-C01	
64	10.01.11	A55-C01	
65	10.01.11	A55-C01	
66	10.01.11	A55-C01	
67	10.01.11	A55-C01	
68	10.01.11	A55-C01	
69	10.01.11	A55-C01	
70	10.01.11	A55-C01	
71	10.01.11	A55-C01	
72	10.01.11	A55-C01	
73	10.01.11	A55-C01	
74	10.01.11	A55-C01	
75	10.01.11	A55-C01	
76	10.01.11	A55-C01	
77	10.01.11	A55-C01	
78	10.01.11	A55-C01	
79	10.01.11	A55-C01	
80	10.01.11	A55-C01	
81	10.01.11	A55-C01	
82	10.01.11	A55-C01	
83	10.01.11	A55-C01	
84	10.01.11	A55-C01	
85	10.01.11	A55-C01	
86	10.01.11	A55-C01	
87	10.01.11	A55-C01	
88	10.01.11	A55-C01	
89	10.01.11	A55-C01	
90	10.01.11	A55-C01	
91	10.01.11	A55-C01	
92	10.01.11	A55-C01	
93	10.01.11	A55-C01	
94	10.01.11	A55-C01	
95	10.01.11	A55-C01	
96	10.01.11	A55-C01	
97	10.01.11	A55-C01	
98	10.01.11	A55-C01	
99	10.01.11	A55-C01	
100	10.01.11	A55-C01	